

St Mary's Catholic Primary School

Coronation Crescent, Madeley, Telford, Shropshire, TF7 5EJ

Telephone: 01952 388255

Fax: 01952 388244

E-mail: a3357@telford.gov.uk

<http://stmarysmadeley.taw.org.uk>

Headteacher: Samantha Griffiths

Assistant Headteacher: Helen Lambie

School Business Manager: Nicola Pryce

St Mary's Catholic Primary School Newsletter

Friday 14th June 2024



The Educational Welfare Officer (EWO), Mrs Pryce, Mrs Jones and I monitor all late arrivals and absence weekly, discussing each child and family and whether punctuality and attendance is improving or worsening. We are gradually seeing some improvement over time. We are experiencing less late arrivals which is great news as children who are on time do not miss introductions to lessons, the timetable for the day, learning interventions and other key information about their day. It also prevents children from having to walk into a classroom when lessons are underway. Attendance is also gradually improving. Good attendance at school, by that I mean over 95%, leads to good progress being made by your child, improved relationships in school, improved confidence, a reduction in anxiety, and better more long-lasting friendships. Thank you for working in partnership with us and being so committed to your child's access of a full and rich education. Mrs Griffiths.



Your contact details

Due to changing our school office system, we will be sending out a data collection sheet for all pupils over the course of the next few days. If you have had any changes to your personal contact details, can you please complete the form and return to the office as soon as possible. Thank you.

Our eSafety Top Tips!

<p>1 People you don't know are strangers.</p> <p>They're not always who they say they are.</p> 	<p>2 Be nice to people like you would on the playground.</p> 
<p>3 Keep your personal information private.</p> 	<p>4 If you ever get that 'uh oh' feeling, tell a grown-up you trust.</p> 

Muxton Extra Holiday Club

Summer Half Term

Open to all children aged school 4—11 years old

Monday 22nd July-Tuesday 3rd September

(Closed Monday 26th August)

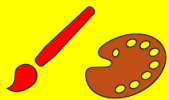
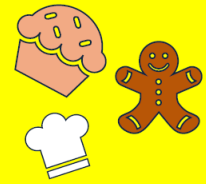
8:00am-3:30pm £17.00

8:00-6:00pm £20.00

(These prices include breakfast)

- ❖ All day arts and crafts
 - ❖ Sports including football, dodgeball, gymnastics etc
 - ❖ Our very own sports day morning.
 - ❖ Local walks
 - ❖ Baking/cooking activities
 - ❖ Water play
 - ❖ Games, BINGO, art competitions, quizzes etc.
- Booking available through your child's scopay.

For more information: [Email:muxtonextra@muxtonprimary.org.uk](mailto:muxtonextra@muxtonprimary.org.uk)
Or phone the school office 01952 327007



Trip Contributions

We work very hard at Saint Mary's to ensure the financial pressures for parents are kept to an all-time low as we are so aware of how difficult it is to make ends meet sometimes. For instance, we keep breakfast club payments at the absolute minimum whilst other schools charge a great deal more, three times as much per day in some instances. We also deliver a breadth of after school clubs that are all free for our families. Our school prom for Year 6 is paid for completely by our school. These are just some of the ways that we are mindful of financial restraints being experienced by lots of our families during the cost-of-living crisis.



We aim to send the children on two school trips each year. We spend a lot of time to make sure the trips offer good value to our families both

experientially and financially. By law we can only ask for contributions. However, we cannot meet the ever-increasing shortfall. We have had to



pay for up to 50% and sometimes more of the contribution directly from the school budget so there is less money for materials and

resources for all our children to benefit from. We do receive contributions from some of our families every time there is a trip planned and indeed, some parents over the years have paid for more than one trip place as a donation. However, some of our children have benefited from many school trips and fantastic experiences over the years, collecting wonderful memories as they go, but we have not received any amount of contribution towards these days out. Any monies, in part or in full, would be so gratefully appreciated.

Any charge made in respect of individual pupils never exceeds the actual cost of providing the activity, divided equally by the number of pupils participating. It does never therefore include an element of subsidy for any other pupils wishing to participate in the activity whose parents are unwilling or unable to pay the full charge.

It is important to note that no child would ever be excluded from an activity simply because his or her parents are unwilling or unable to pay. If insufficient voluntary contributions are raised to fund a visit, or we cannot fund it from some other source, then we will be forced to cancel.

We do understand that spiralling costs of household necessities, rising energy costs and inadequate social security policies are hitting households with low income hard, so we give parents as much warning as possible

about forthcoming trips. In addition to this, we offer an online contribution plan, splitting the overall outlay per child into three easier instalments.

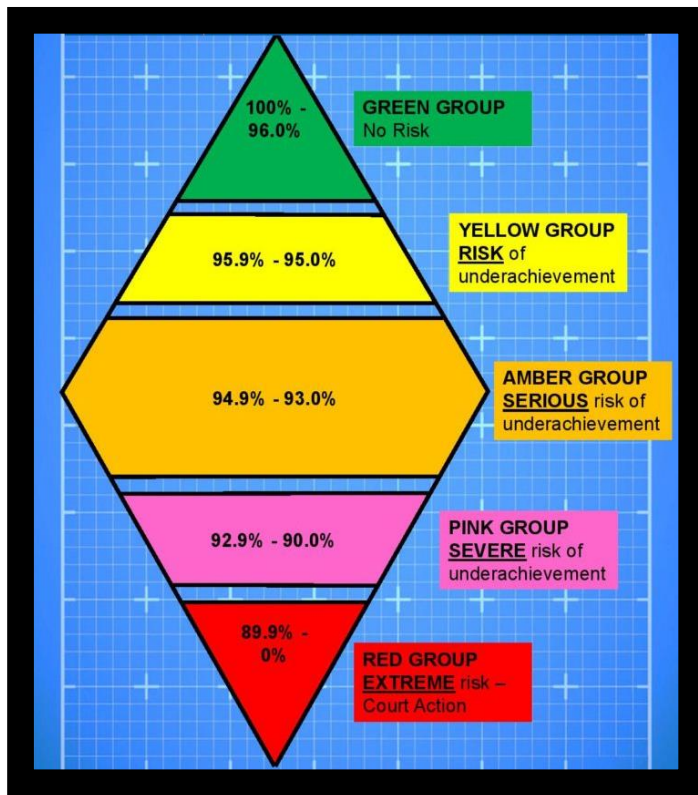
Thank you for taking the time to read this.



Dates for your diaries

Date	Event	Notes
Thursday June 20 th	Year 5 Class Curriculum Assembly for parents	8.50am start in the hall.
Monday July 1 st and Wednesday 3 rd	Parents Evenings	Appointment times will be given-out after half-term
Friday July 5 th	Year 6 Leavers' Prom	5.30-9.00pm
Wednesday July 10 th	Family Picnic	11.45am-1.30pm. All parents welcome. More information will be provided.
Monday July 15 th	Key Stage 2 Sports Day	9.00am – 11.00am. All parents and family members invited. More information will be provided.
Tuesday July 16 th	Key Stage 1 Sports Day	9.00-10.30am. All parents and family members invited. More information will be provided.
Thursday July 18 th	Year 6 Leavers' Assembly	8.50am- 10am. All parents of Year 6 children invited.
Friday July 19 th	Break-up	Tee-shirt signing day for Year 6

Attendance Check



Every Minute Counts

If you arrive late to school everyday your learning begins to suffer. Below is a graph showing how being late to school everyday over a school year adds up to lost learning time.

